

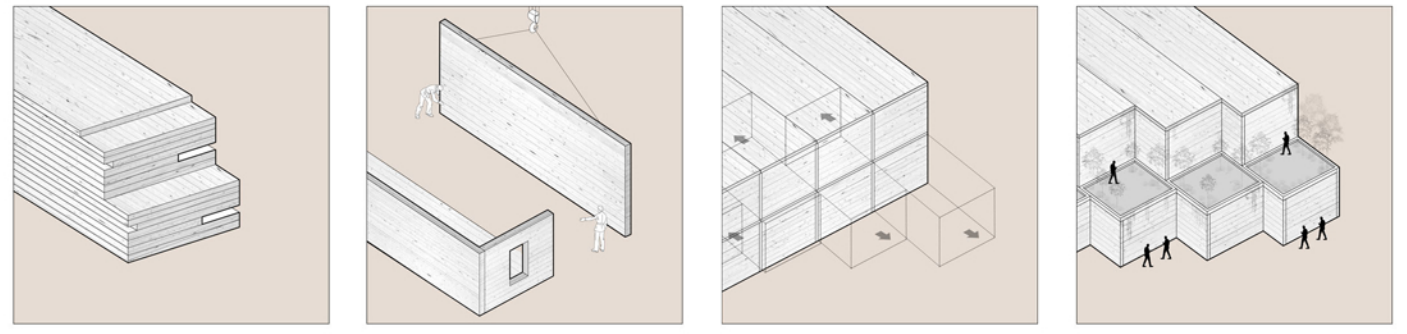


# Wood and Pune

The Oxford of the East or the queen of deccan, Pune has and will, adorn numerous hats in its vast existence. The metaphorical seed that the **Peshwa's** (Maratha rulers) sowed, transformed and bloomed into a cultural and educational hub, richly laced with deep **historical roots**.

The **Peshwas** were no great city builders, but the development of the **WADA** as a house form reached its climax in Peshwai Pune and was synonymous with the cityscape, and gave it a distinctive architectural character. A character which **adorned wood**, its possibilities and celebrated the unique notional quality of it.

The intent of this intervention was to look at wood the same way it was looked at, in the earlier days and bring back the touch of wood the city had. In a process where the material could be explored into shaping spaces that could bring the essence of the cultural community that Pune had, in a modern contemporary setting.



**Site**  
Located in Pune, Shivajinagar, the site, overlooking the Mula river with a moderate grain of development serves as the right place to showcase the possibilities of CLT.

**Precinct development**  
The parti is ideated to have local shops at the ground level, hence the front edge opens into a landscaped plaza and the rear sits as stepped landscape approaching an open space.

**Basement**  
In a setting like Pune, with increasing demand of parking spaces, the precinct is developed into levels resulting into two basements for all the parking requirements of the tenants.

**Structural Anchors**  
The structural core is of RCC provided at the periphery of the built mass, anchored together with a steel bridge, with an intent to stabilise the cantilevered CLT blocks below.

**Units**  
Taking into account the lightweight property of CLT, the parti is ideated into cantilevered units (84 units), giving spaces like aangans, creating better shaded spaces and a unique spatial experience.

**Social magnet**  
Reminiscent of a chawl, here the passages are ideated to blur the line between the private and the public, with aangans opening into them, these narrow but long spaces become an activity magnet.

**Greenscapes**  
These aangans / frontyards act as nukads, where the commuters can sit, talk and often celebrate festivals. These aangans, are flexible for user to amend in any way, making its own identity.

**Radiation study**  
As using CLT has a zero carbon footprint, the intent was to also make it perform efficiently. With strategic massing, the radiation onto the building is dramatically reduced, giving a comfortable space.

Upper Floor Units  
Floor Layout  
Lower Floor Units  
CLT Intervention  
Exploded unit as detailed above  
Landscaped plaza  
Exit  
Road  
Entry  
Road  
**Exploded Isometric**

**Sectional Isometric**

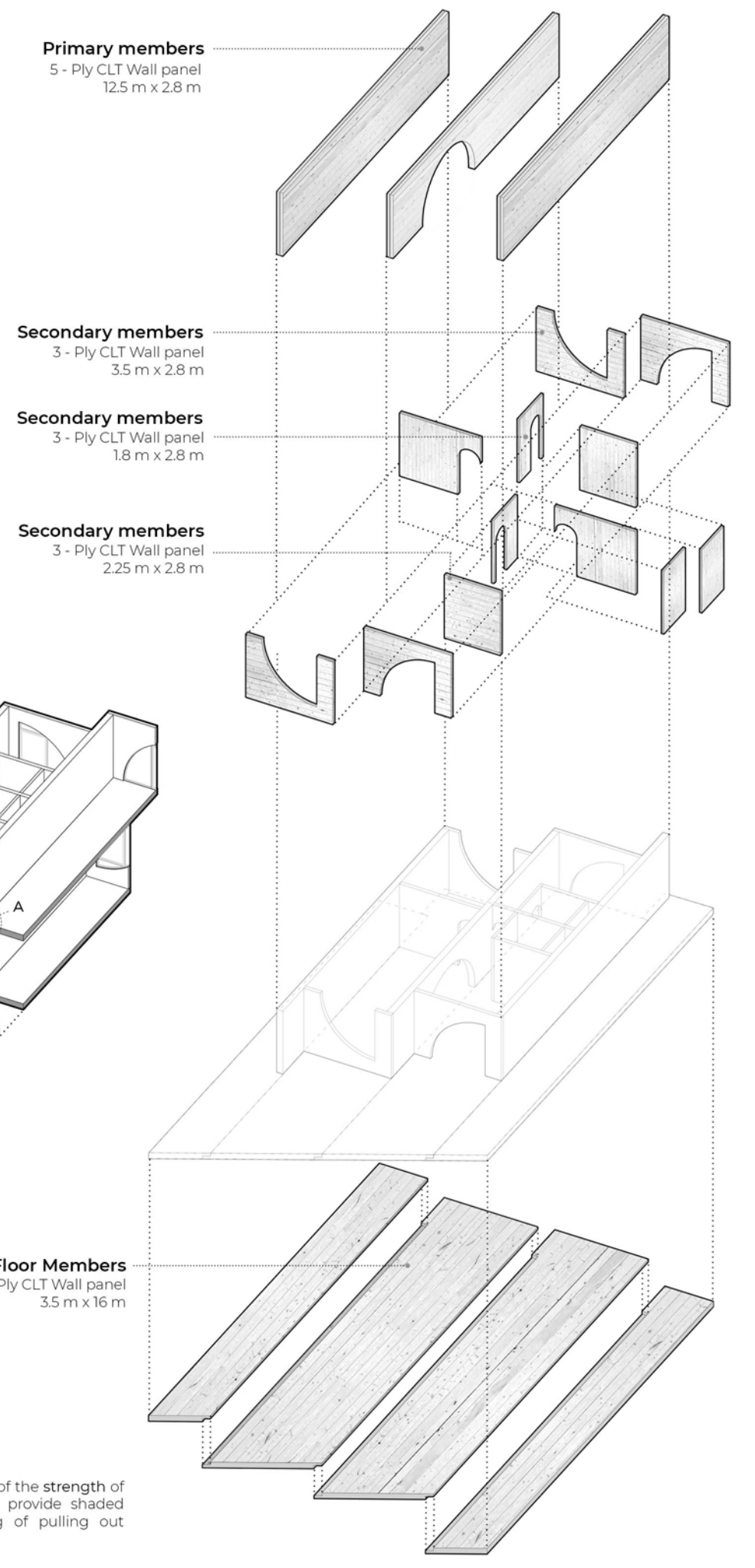
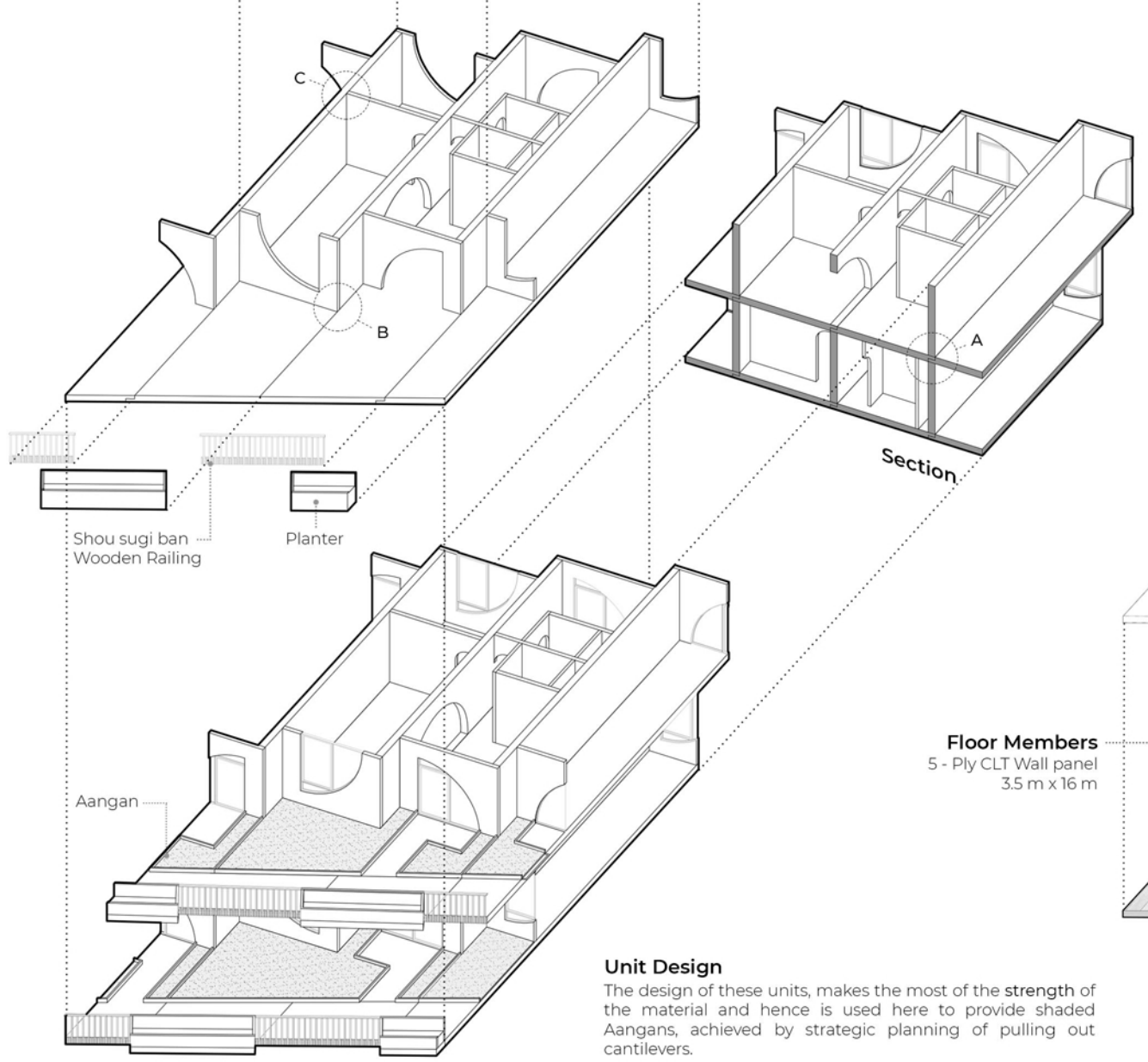
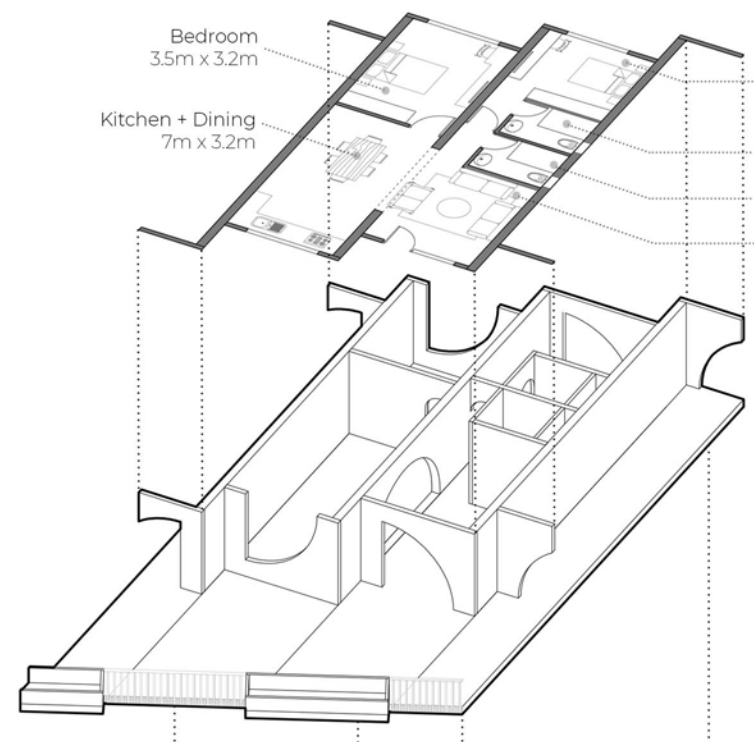
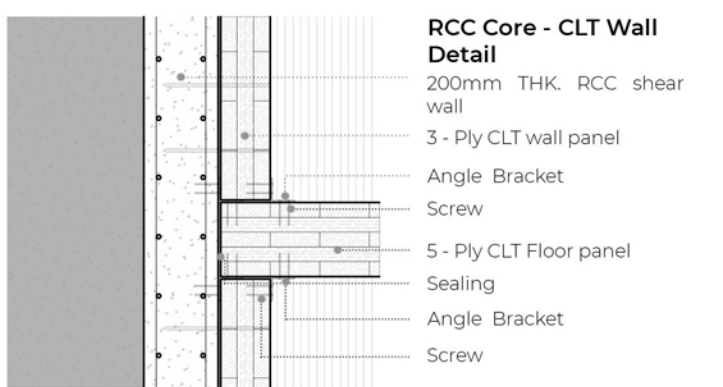
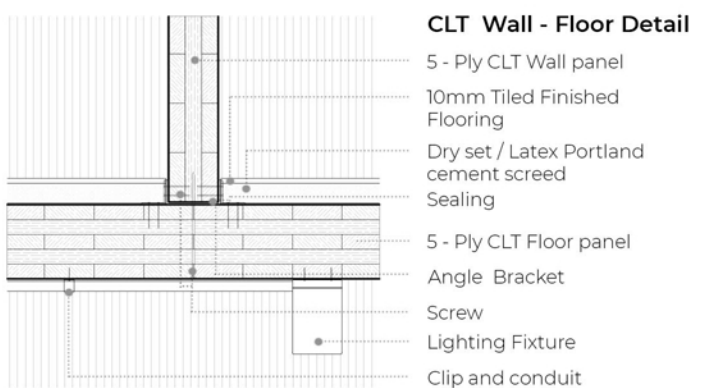
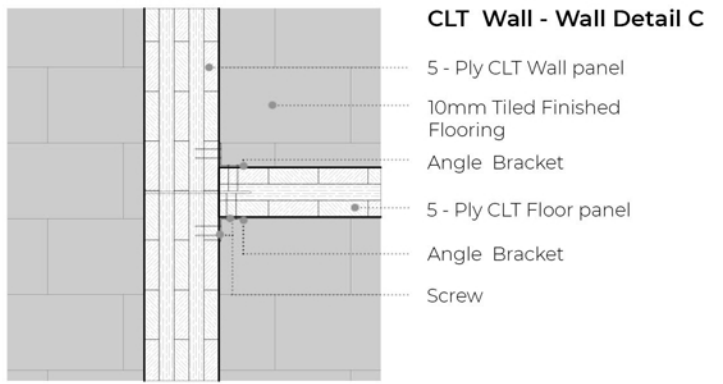
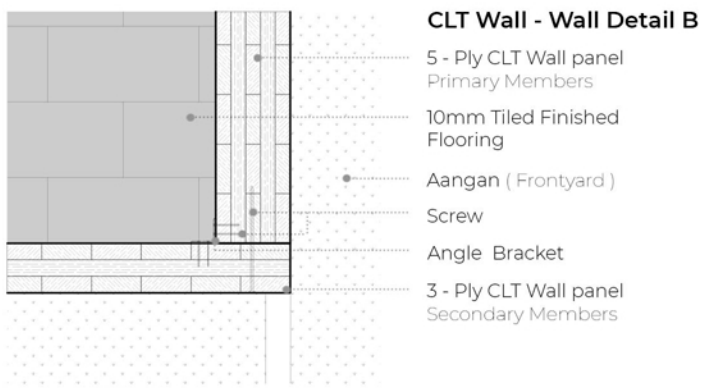
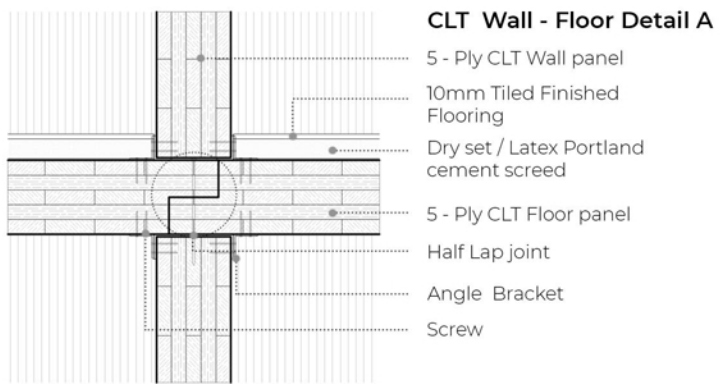
**CLT Roof Assembly**  
Sloped sheet metal coping  
3 - Ply CLT Parapet wall panel  
EPDM roofing membrane  
5 - Ply CLT roof panel

**CLT Window Wall Assembly**  
10mm Tiled finished floor  
Dry set / Latex Portland cement screed  
5 - Ply CLT floor panel  
3 - Ply CLT wall panel

**CLT Window Wall Assembly**  
Single glazed casement window  
35mm Black Dye Aluminum window frame  
5 - Ply CLT floor panel  
3 - Ply CLT wall panel

**CLT Wall - Slab Assembly**  
3 - Ply CLT wall panel  
Softscape Kerb 10mm  
Soil pit  
5 - Ply CLT floor panel  
3 - Ply CLT wall panel

**CLT Foundation Wall Assembly**  
3 - Ply CLT wall panel  
10mm Tiled finished floor  
Dry set / Latex Portland cement screed  
Structural footing



**Unit Design**  
The design of these units, makes the most of the strength of the material and hence is used here to provide shaded Aangans, achieved by strategic planning of pulling out cantilevers.

