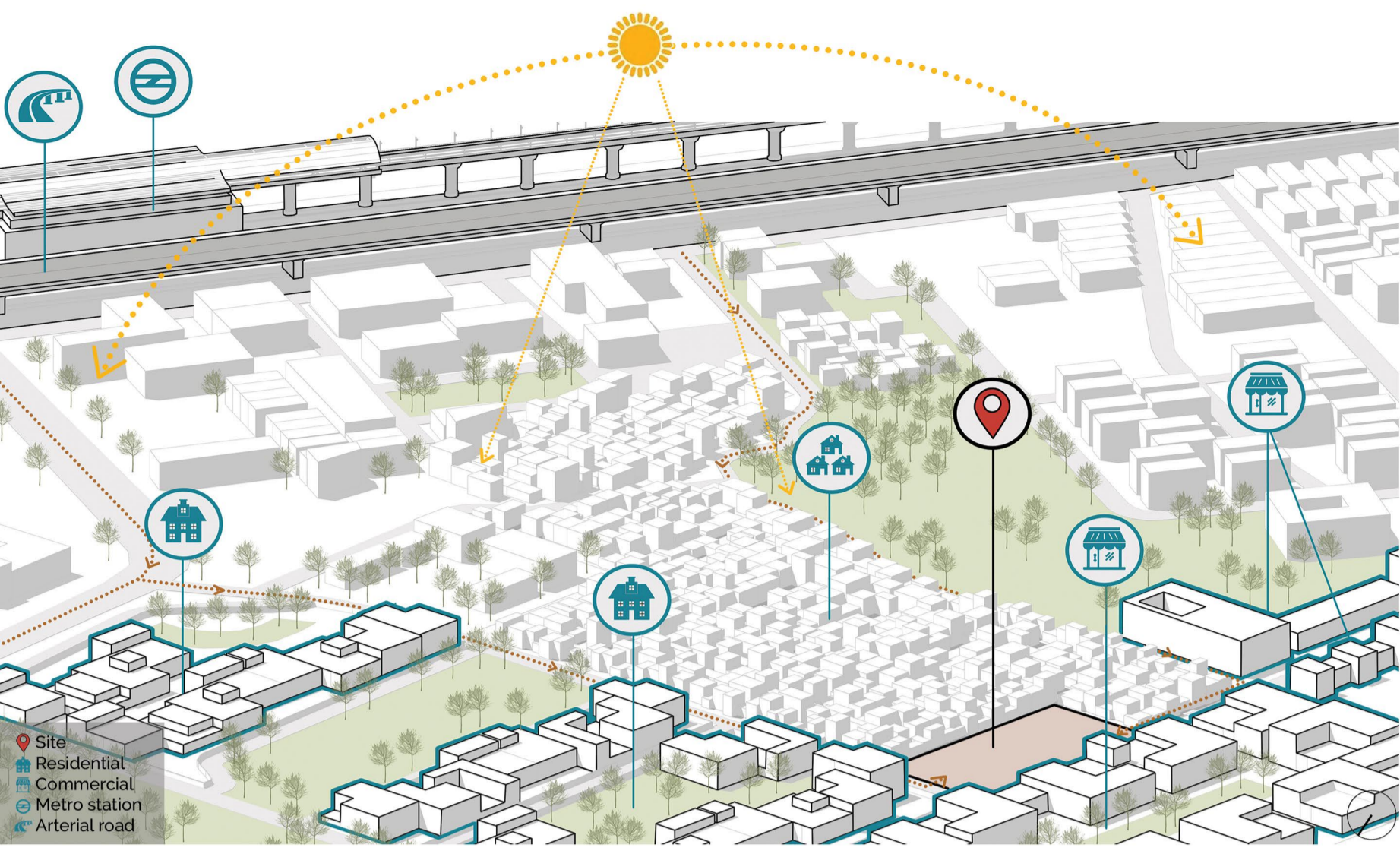


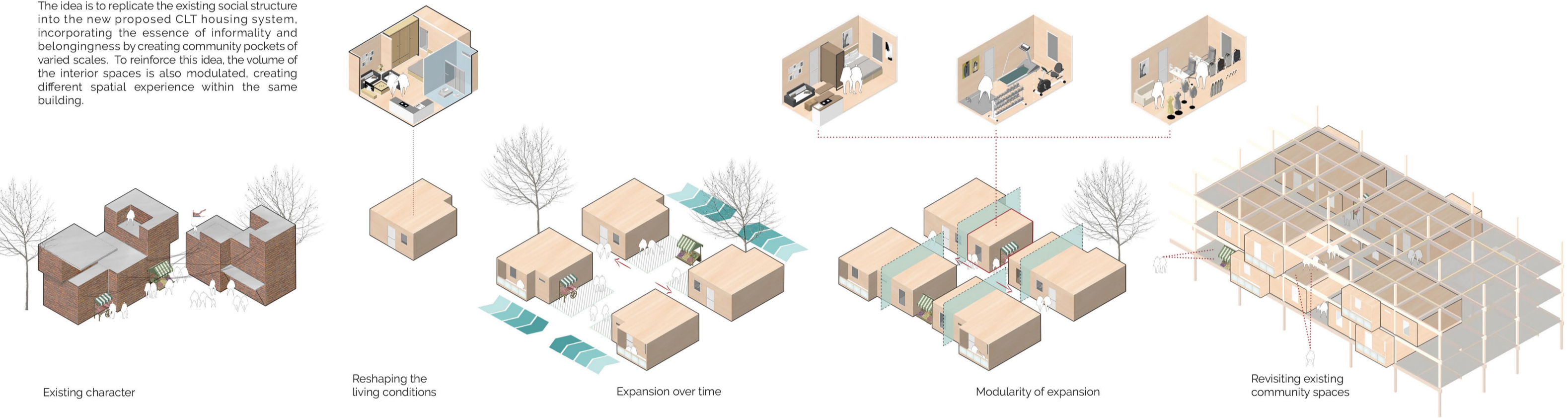
Cross Laminated Timber Culture, Life + Time

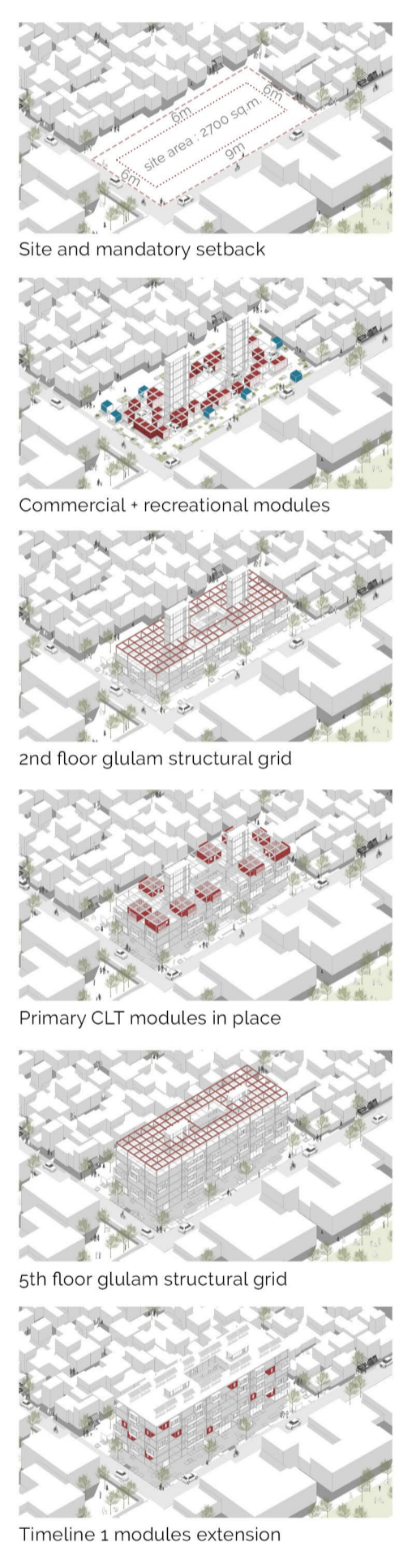
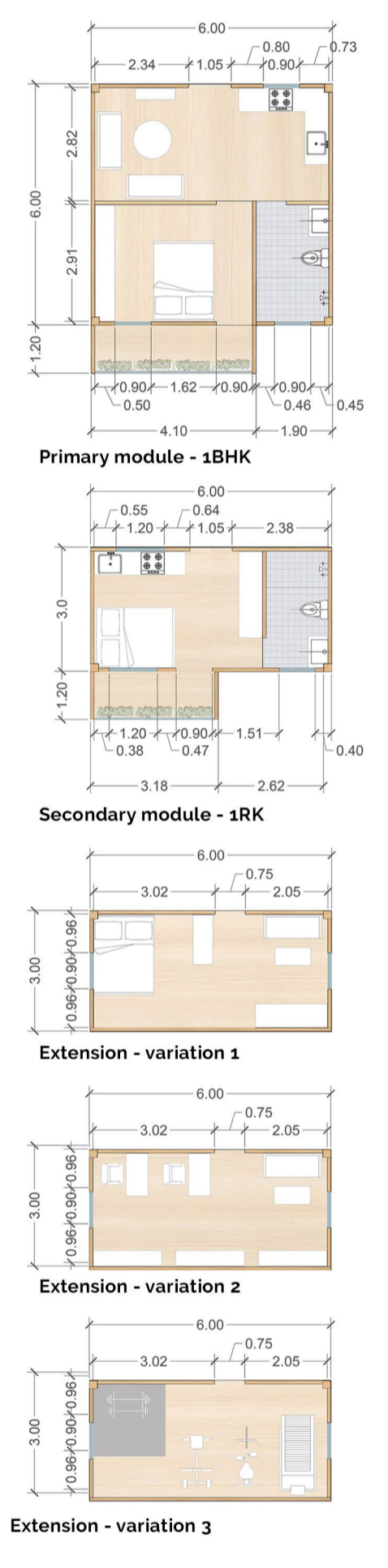
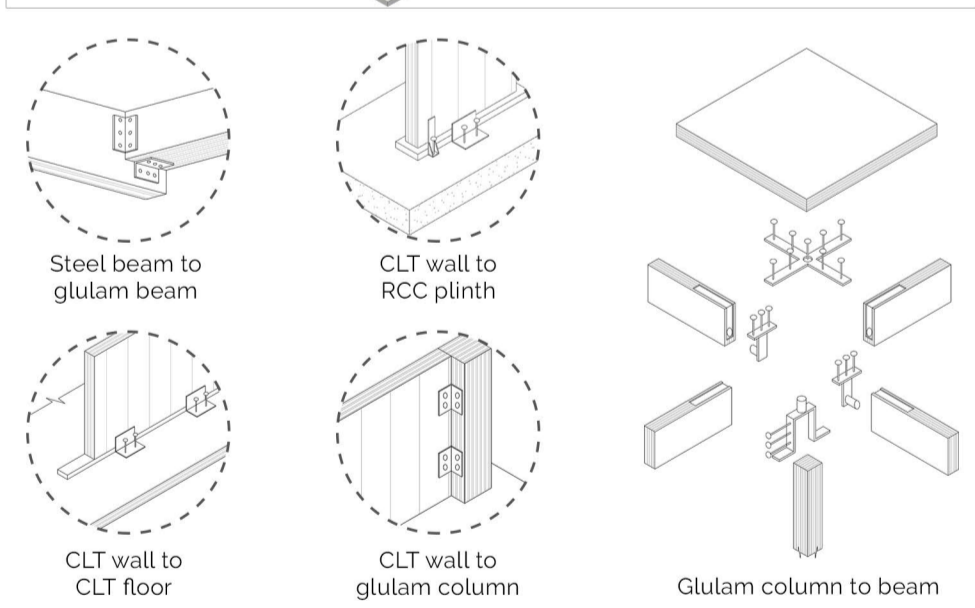
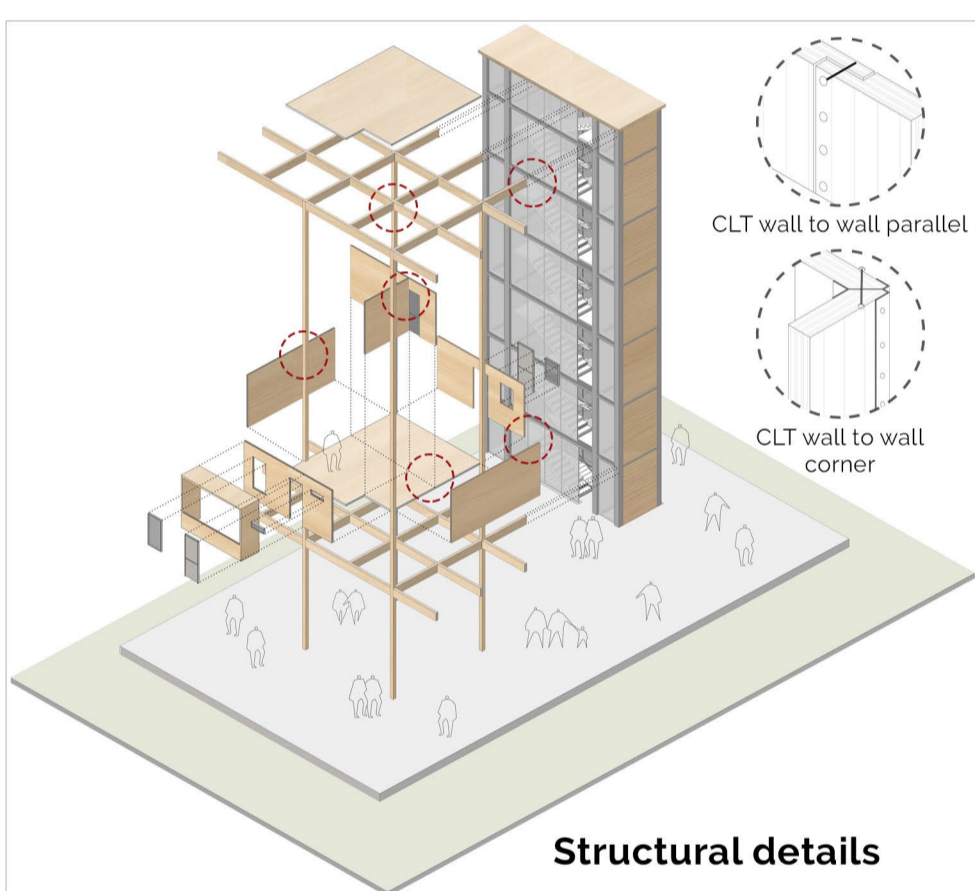
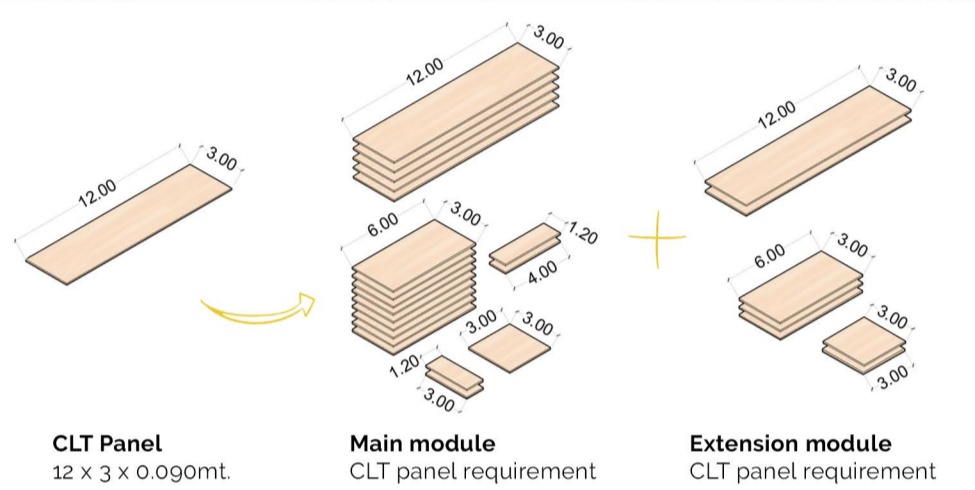
The ever increasing need for adequate urban housing solutions in many growing cities in India has led to the formation of a different kind of living culture in places where the developers or the government proposed housing schemes have not been able to make their marks yet. One among many such localities is located in Dilshad Garden area in the city of Delhi, namely Kalandar Colony which accommodates a thriving life of closely interconnected communities.



The Concept

The idea is to replicate the existing social structure into the new proposed CLT housing system, incorporating the essence of informality and belongingness by creating community pockets of varied scales. To reinforce this idea, the volume of the interior spaces is also modulated, creating different spatial experience within the same building.





The Construction Process

