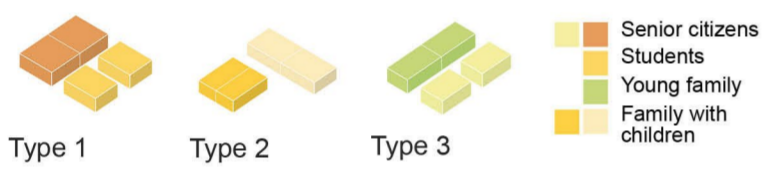




ROOFTOP HABITAT

Living modules spaces



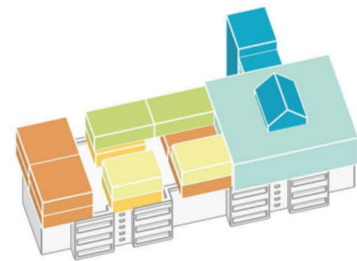
Public space modules



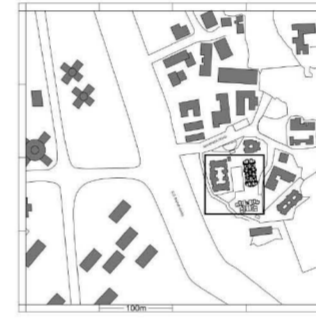
The idea is to have a system-based design to refine housing architecture in India making it more sustainable, green, quick and easy to construct. In addition to the idea of modules, it is necessary to create special communities based on the interests and age groups of residents by varying the units.

The foundation of new housing for India is the existing mass housing buildings of India. We propose a system of residential and public space modules that would complement existing buildings from above, using CLT as the main material.

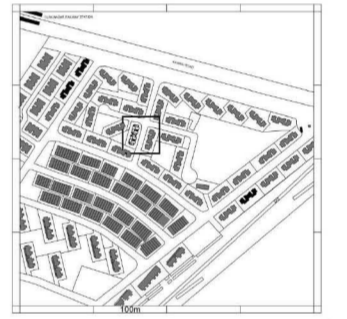
ADAPTING modules on existing mass housing in India



TYPOLGY - A
modules of type 1 and 3 +
media library

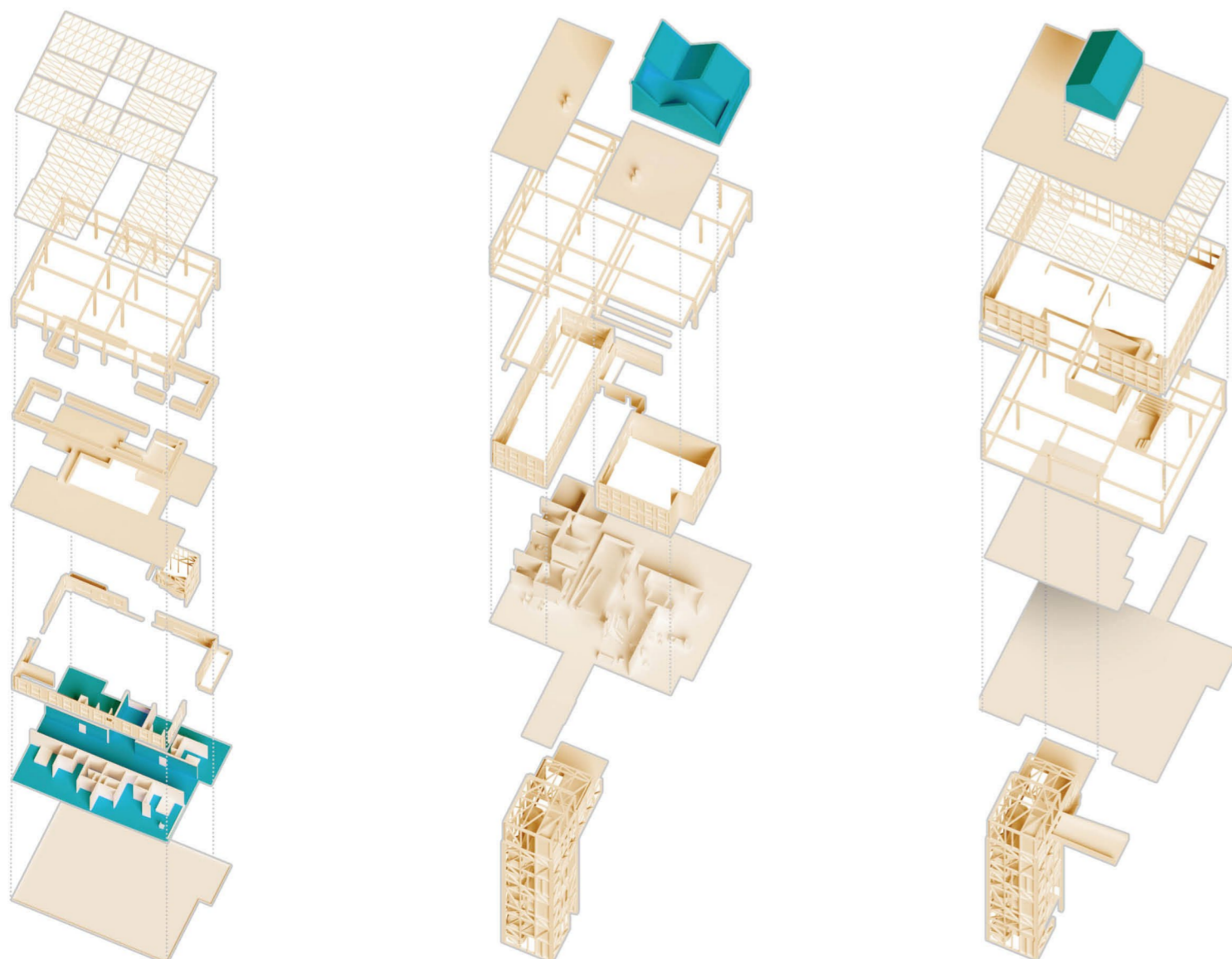


TYPOLGY - B
modules of type 1 and 2 +
kindergarten



TYPOLGY - C
modules of type 1 and 3

CONSTRUCTION SCHEME



Living - Type 3

Each house provides a neighborhood community with the opportunity to live together on the same estate: they are connected, but spatially separate units close enough to interact and help, but far enough apart to maintain privacy.

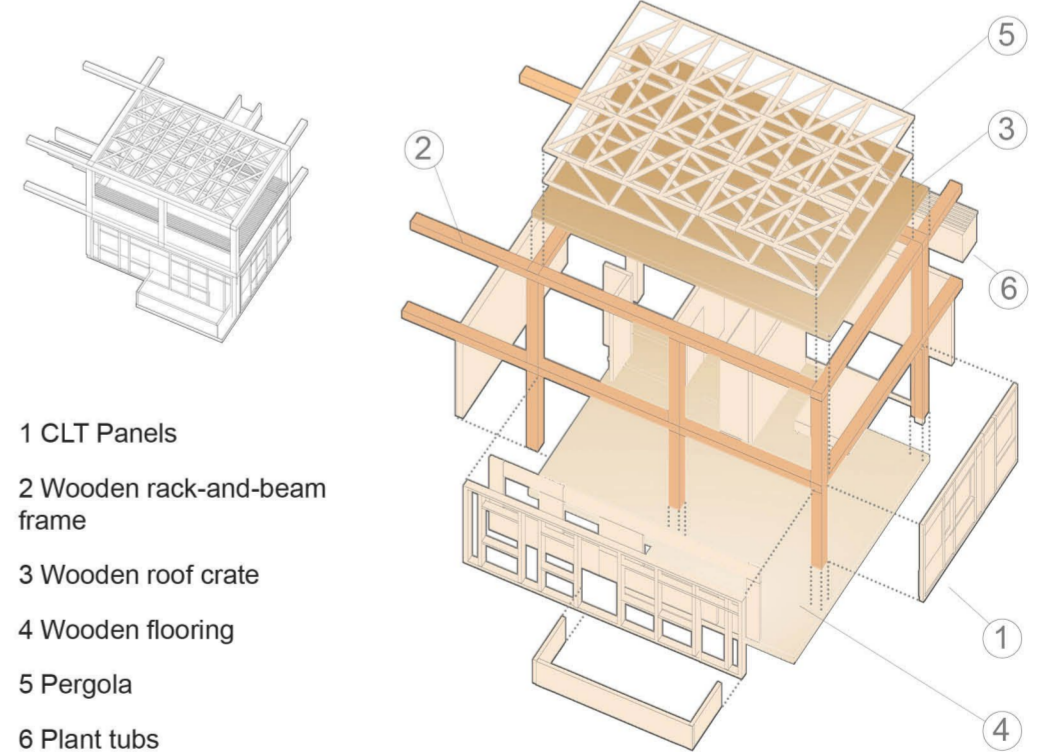
Living + Public - Kindergarten

An important aspect of the project for us was to think about the lifestyle and needs of future residents.

Public - Media library

This is reflected in the design of collectively programmed spaces grouped on the roof floor: a public cafe and media library open to the surrounding neighborhood, a kindergarten and a community garden for the elderly.

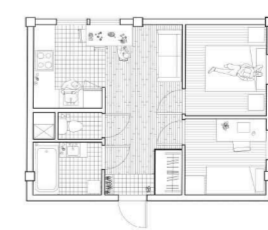
LIVING MODULE CONSTRUCTION SCHEME



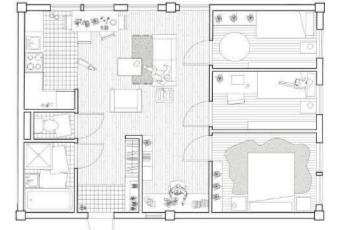
- 1 CLT Panels
- 2 Wooden rack-and-beam frame
- 3 Wooden roof crate
- 4 Wooden flooring
- 5 Pergola
- 6 Plant tubs



Senior citizens



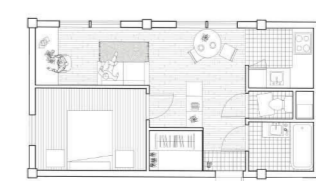
Students \ young family



Family with children



Family with children

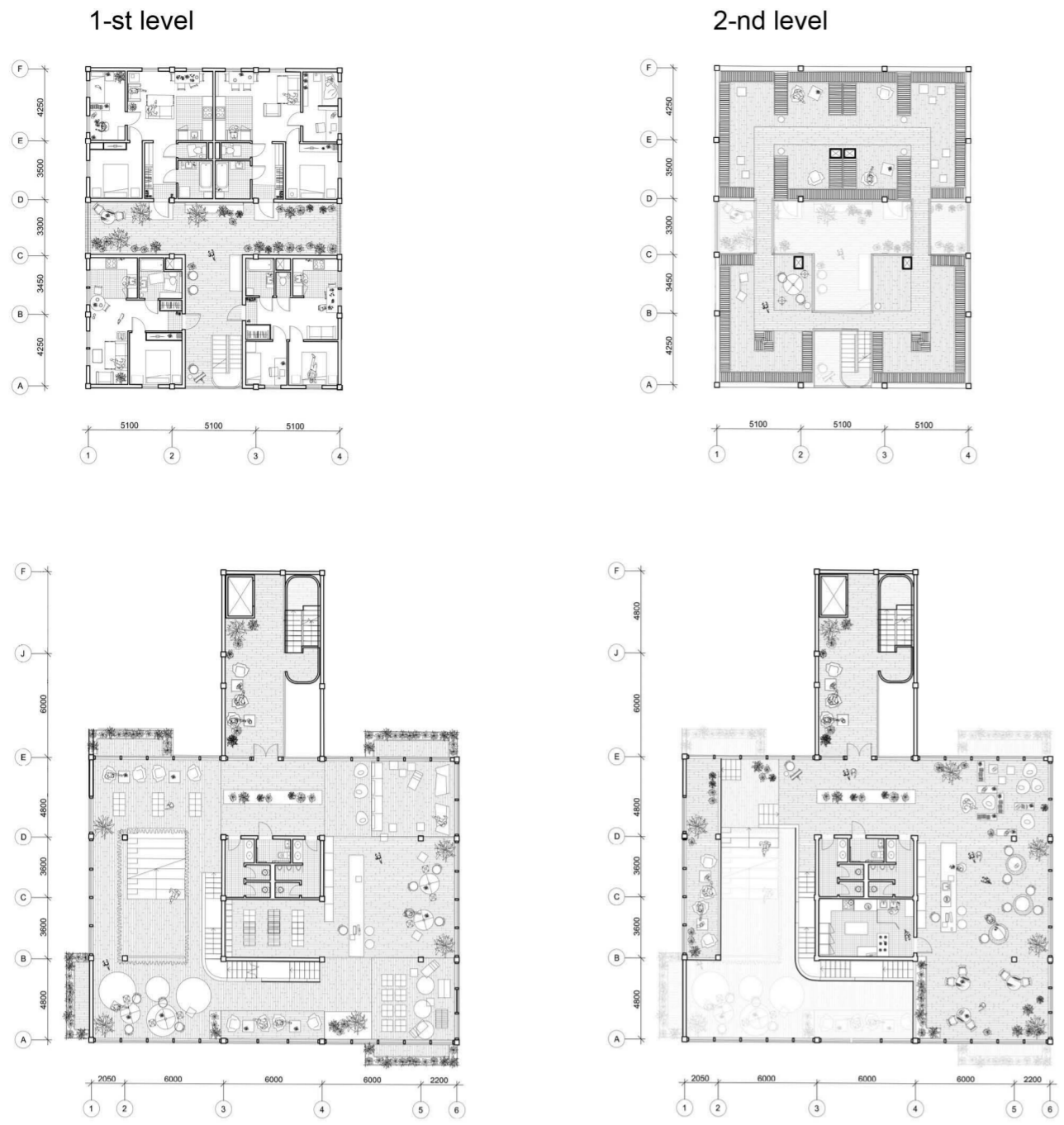


Students \ young family



Senior citizens

TYPOLOGY - A
Plans



TYPOLOGY - B
Plans



MASTERPLAN TYPOLOGY - A

