

# STEP UP

RE-IMAGINING HOUSING FOR THE MILLENNIALS



The massing allows each user to enjoy indoor-outdoor experiences and allows visual interactions between users.

The Covid-19 pandemic and social distancing has blurred the boundaries between home, work and play. This results in a new typology of residences that blends spaces for all three activities with multifunctional indoors and attached open spaces, and this is the essential idea behind **Step Up: A Co-Living Experiment**.

## YOUNG PROFESSIONALS + STUDENTS

The home is much more than a place for rest.

Space for Music + Studying



Space for Cooking + Outdoors



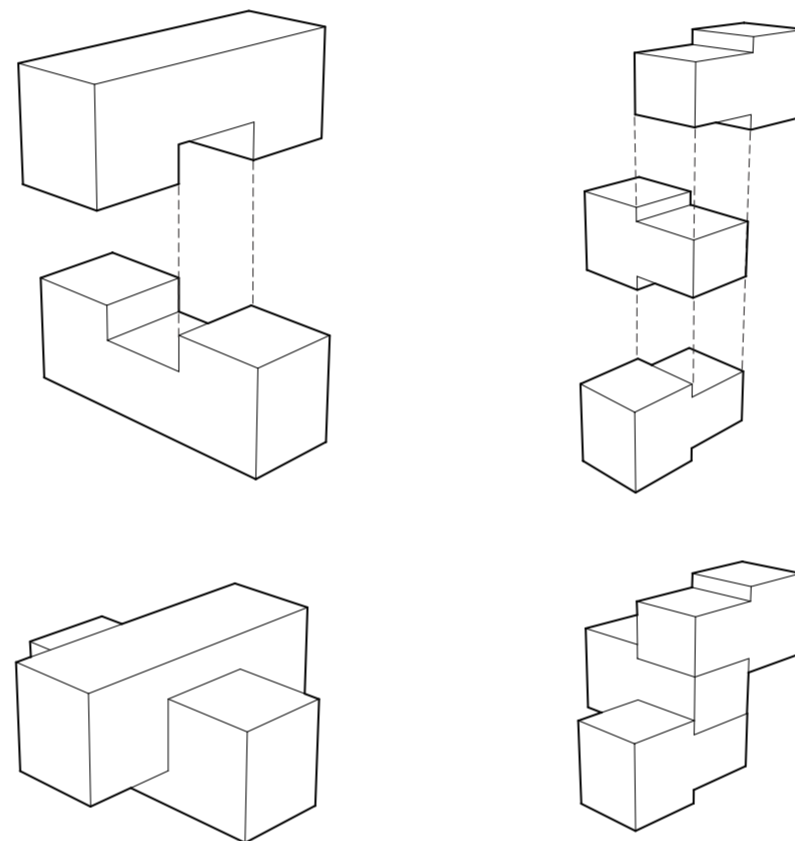
HOUSING FOR YOUNG = MULTIFUNCTIONAL + AFFORDABLE

Space for Working + Entertaining



Space for Working Out + Reading

## MATERIAL-INSPIRED MASSING

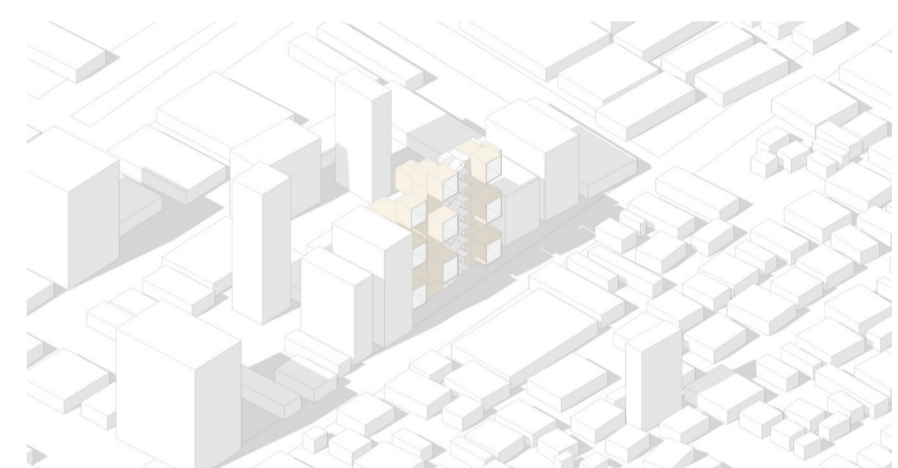


Traditional lap joint from timber construction ensures greater structural stability.

Each unit is designed to interlock with each other - creating a 3-dimensional grid.

## ADAPTABLE + SCALABLE

Designed as a modular system, the units can work in isolation as well as a cluster. Thus, it can be adapted to fit into the various sites available in the existing city fabric.



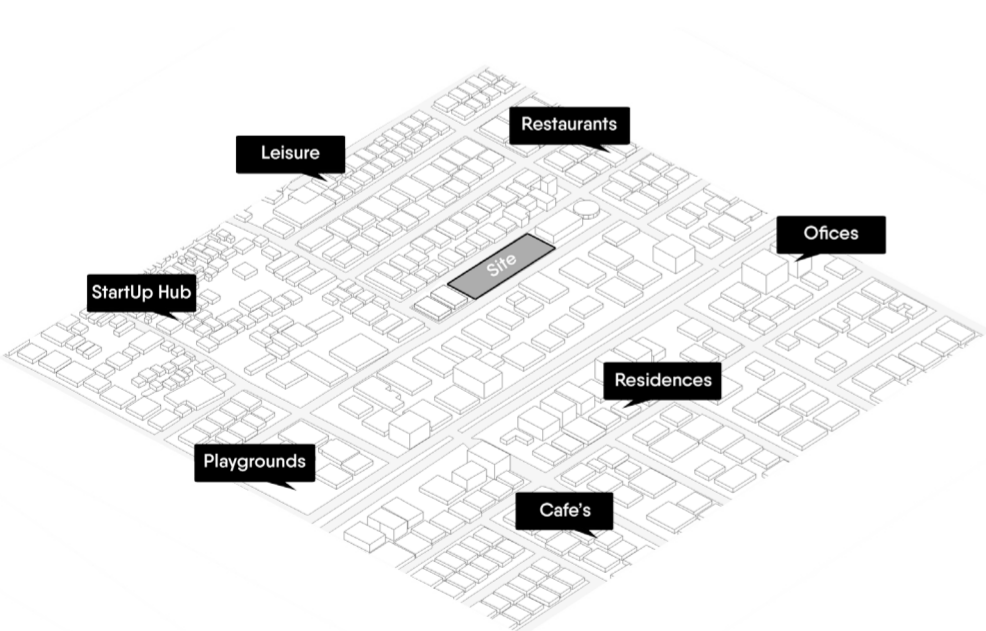
URBAN INFILL INTERVENTION



LINEAR STREET RE-DEVELOPMENT

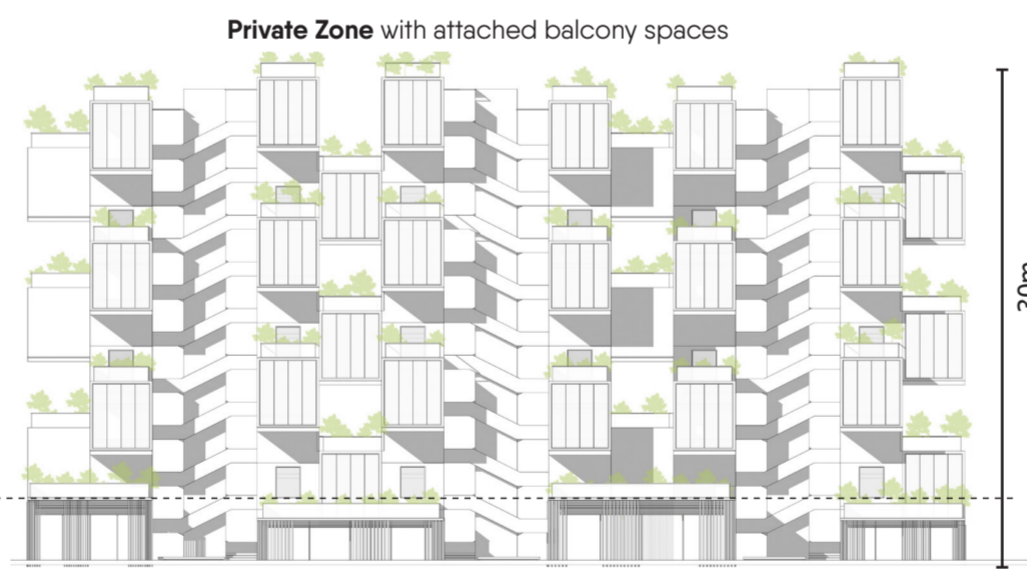


CITY BLOCK RE-DESIGN



## INDIRANAGAR, BANGALORE

The compact design maximises the potential of living in the vibrant yet dense city fabric.



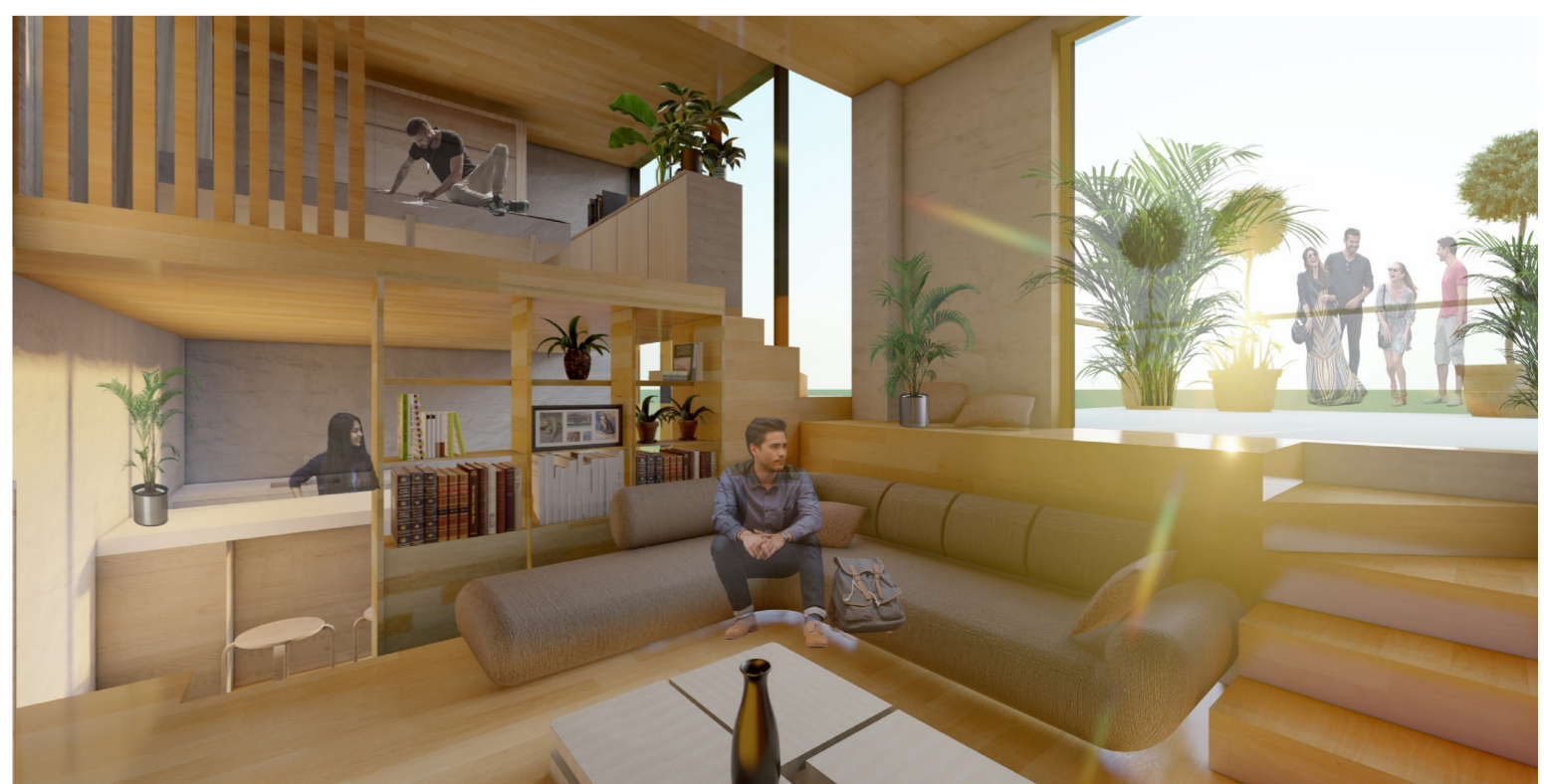
Public Zone including cafes, laundry facilities, and small retail

## COMPACT YET OPEN LIVING

The interlocking split levels accommodates 100 units. The mid-landings allow for visual connections while providing privacy.

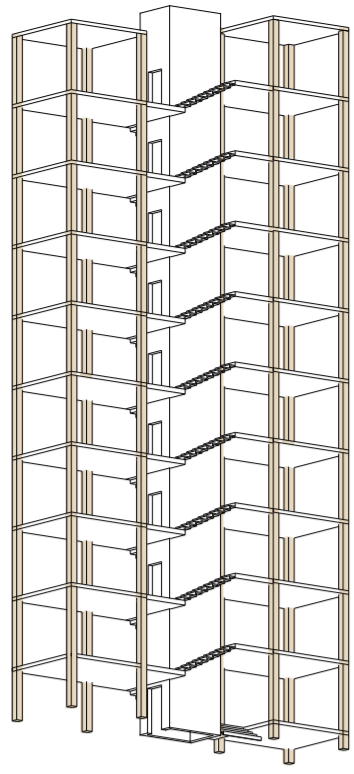


Multiple balconies at various levels look out onto the central spine, making it an interactive space.

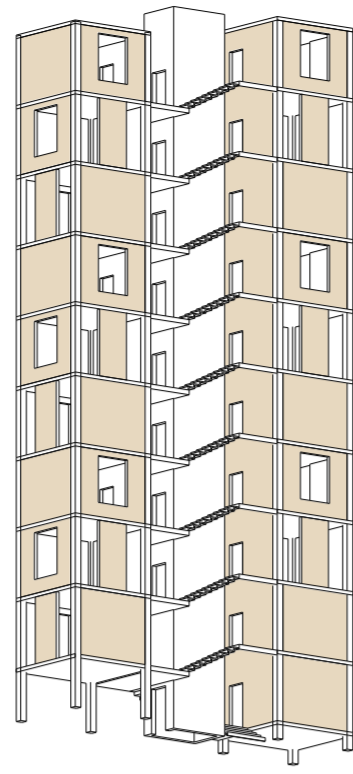


Interior spaces are designed to be bright, multi functional spaces.

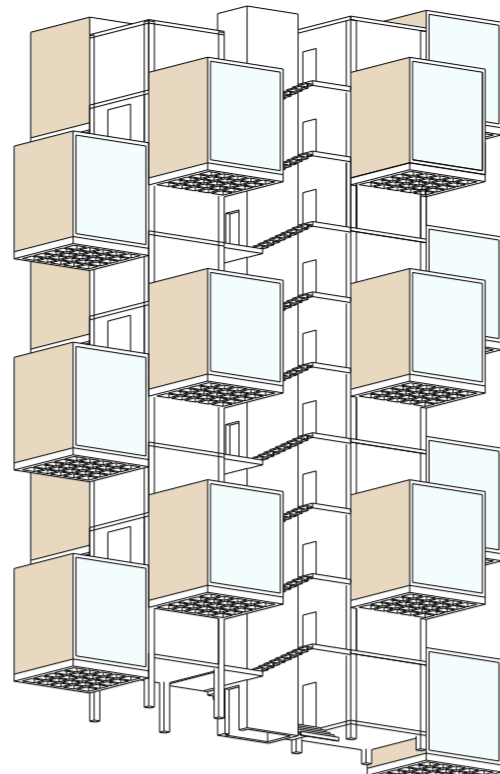
# CONSTRUCTION METHODOLOGY



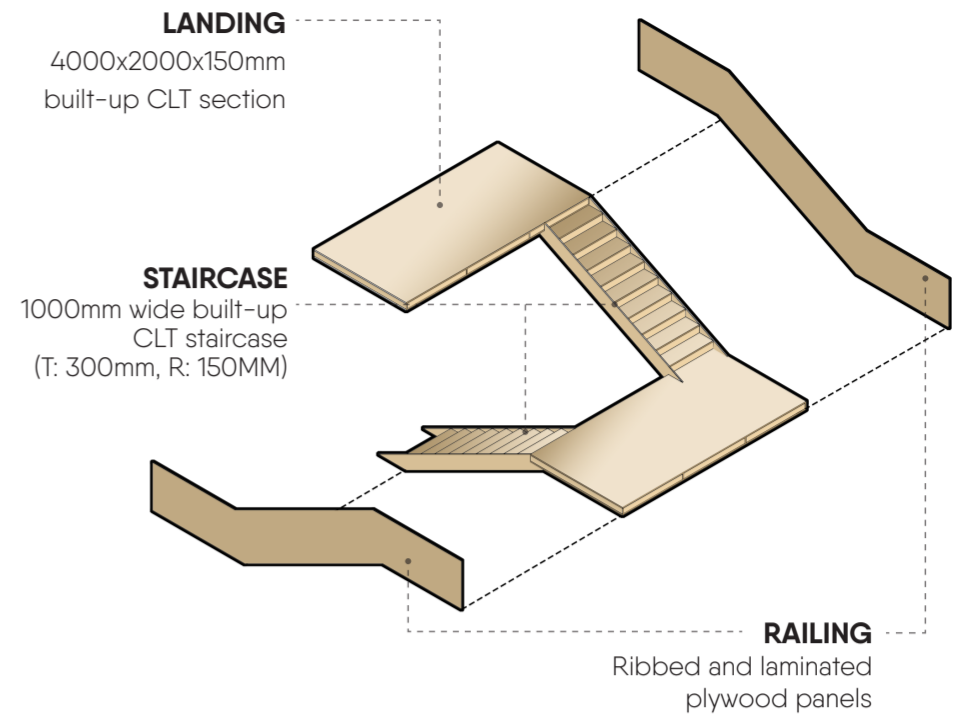
**Glulam columns** provide vertical structural supports.



**Load bearing CLT walls & floors** transfer the load vertically and horizontally.

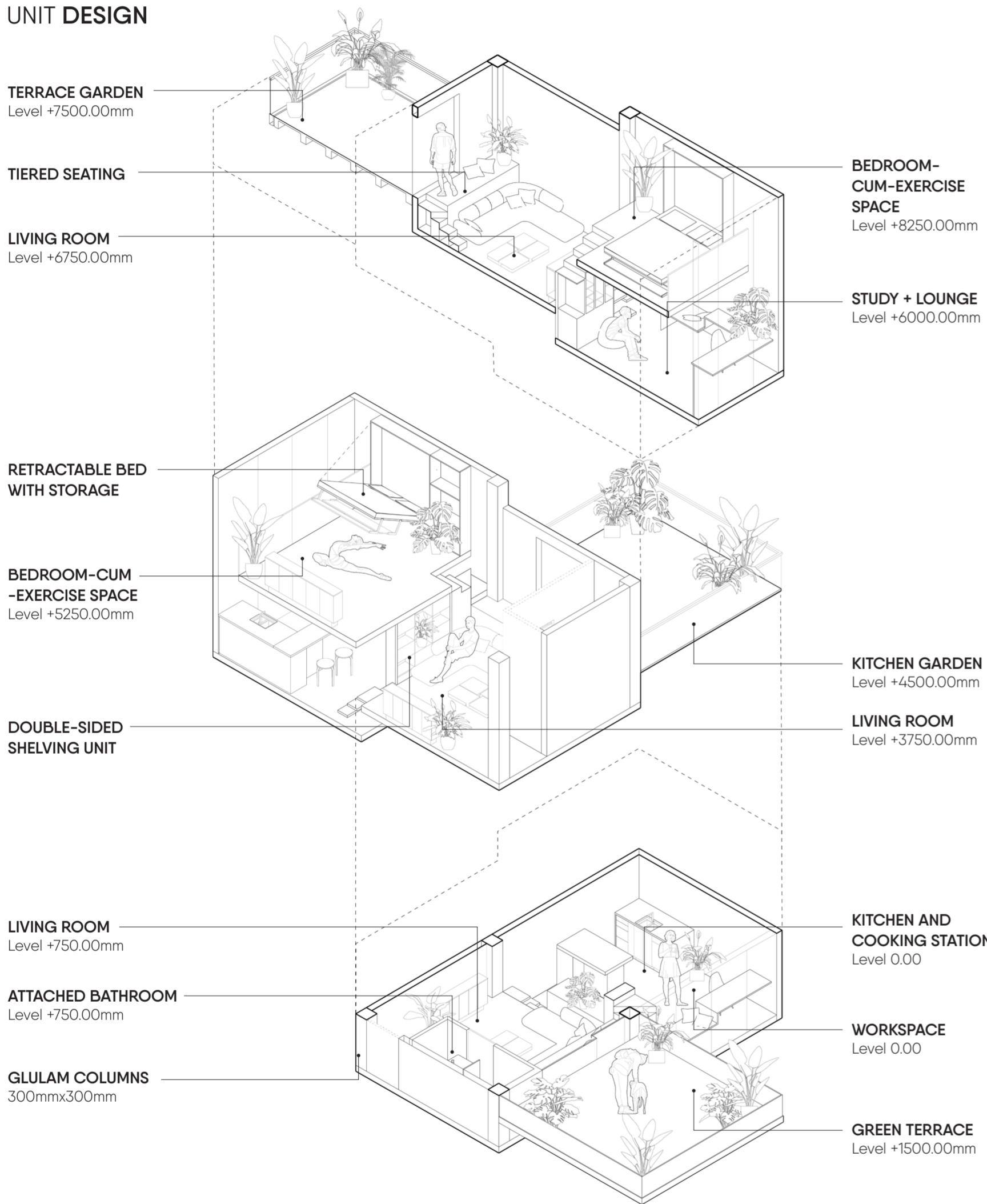


The **waffle slab** and **lightweight stud walls** allow for cantilevering extensions.



EXPLODED DIAGRAM OF **CLT STAIRCASE CORE**

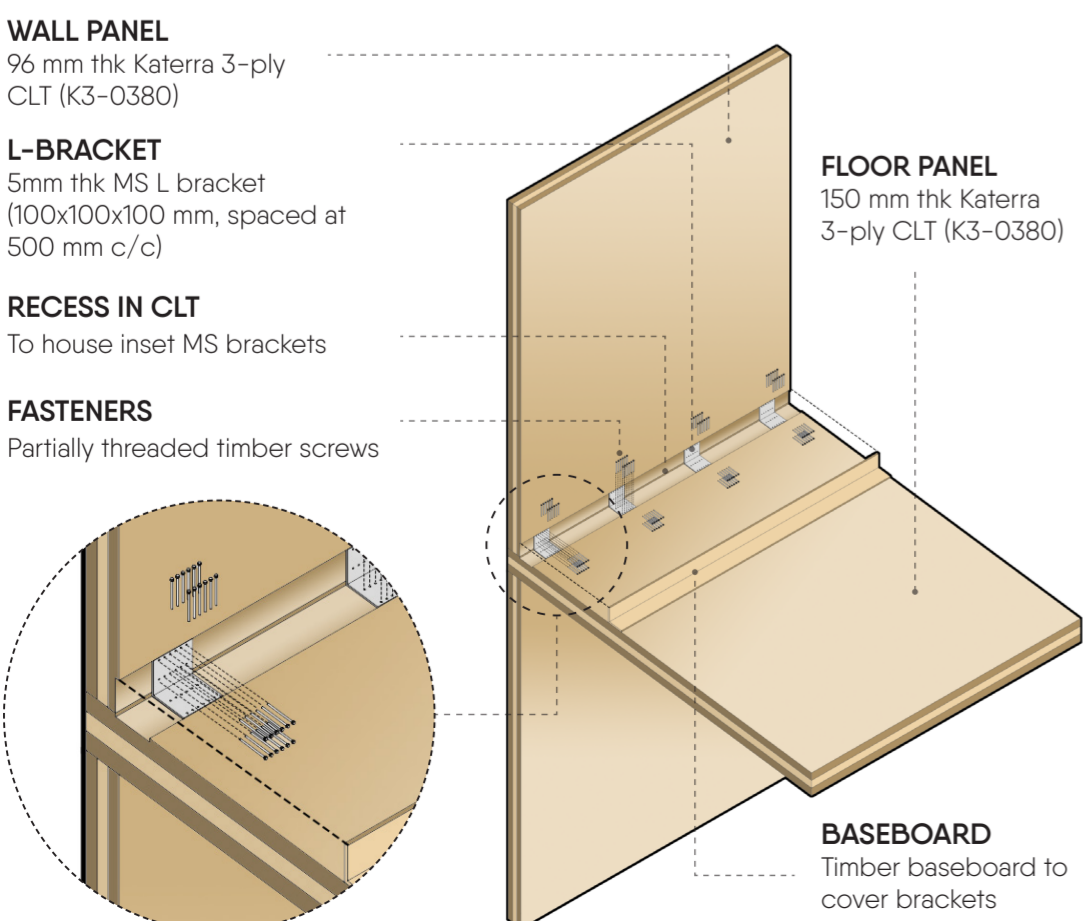
## UNIT DESIGN



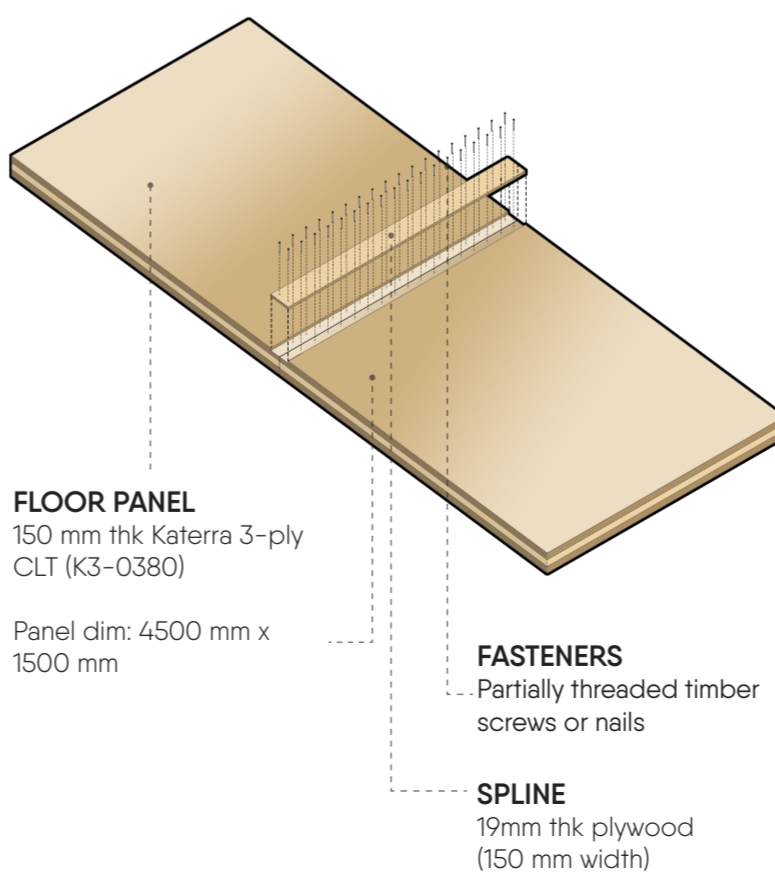
## FLOOR PLANS



## WALL TO FLOOR JUNCTION



## PANEL-TO-PANEL JOINERY



## FLOOR-TO-LIFT SHEAR WALL JUNCTION

