

SECRET ROOFTOP GARDEN

THE CONTEXT



The design territory is located in India, the city of Mumbai. An area with an existing residential area was chosen for the renovation project. There are residential buildings on the Worli district.



Bombay Development chawls in Worli built in 1923.

For the project, a monotonous typical development of workers' quarters of prefabricated houses that need renovation was chosen.

Three-storey residential buildings with a width of 11 meters are ideal for the implementation of glued timber structures. The small dimensions of these houses allow to increase the area of residential development due to parasitic architecture.



THE CONCEPT

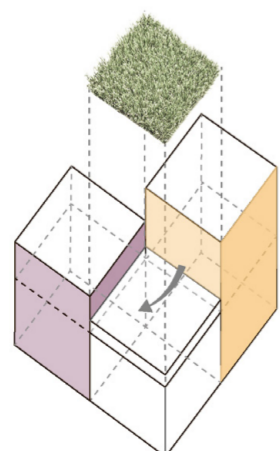
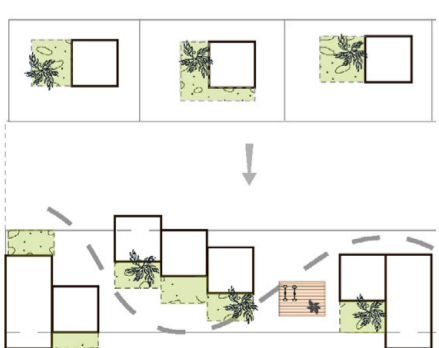
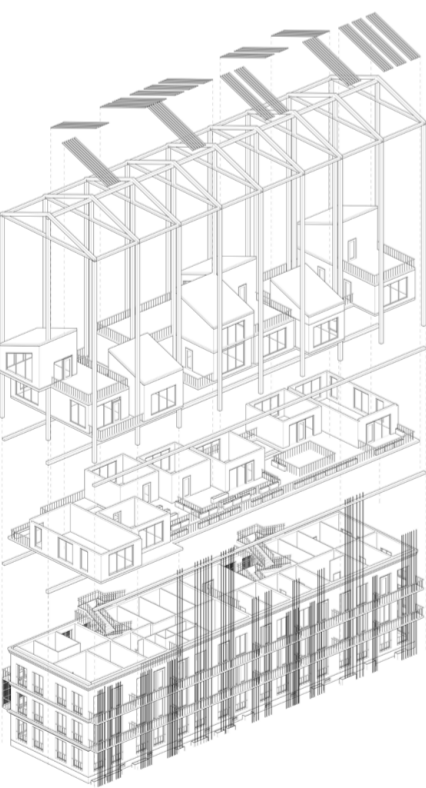


The development of the selected type of residential buildings is very dense, however, it has a low number of storeys. Such potential of volumetric space can be used to add residential floors and increase population density without compromising the area of urban space.

Also, a distinctive feature of such a building is its monotony. Therefore, according to the project, it is proposed to renovate an entire block with partial introduction of a parasitic architecture. This solution will diversify the surrounding space - make the building more complex and interesting.

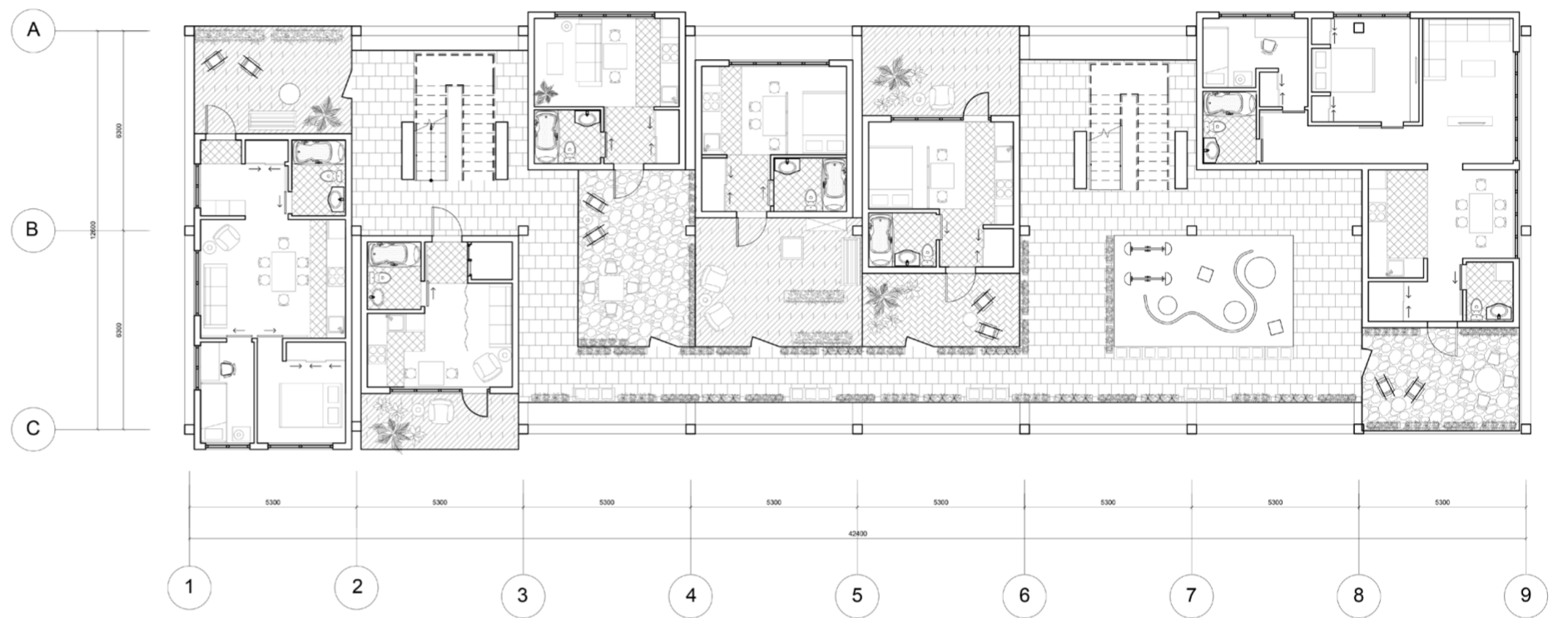
Structure: the framework of glued timber, which allowed the extension of residential modules beyond the boundaries of the existing facility, this does not violate the original structure of the building.

The project of residential models includes a system of CLT panels, which allows you to make modules as mobile as possible and integrate them organically from a load-bearing wooden frame. It is important to note that the project has developed two add-on floors, each with a single-level, two-level, and mezzanine apartments.

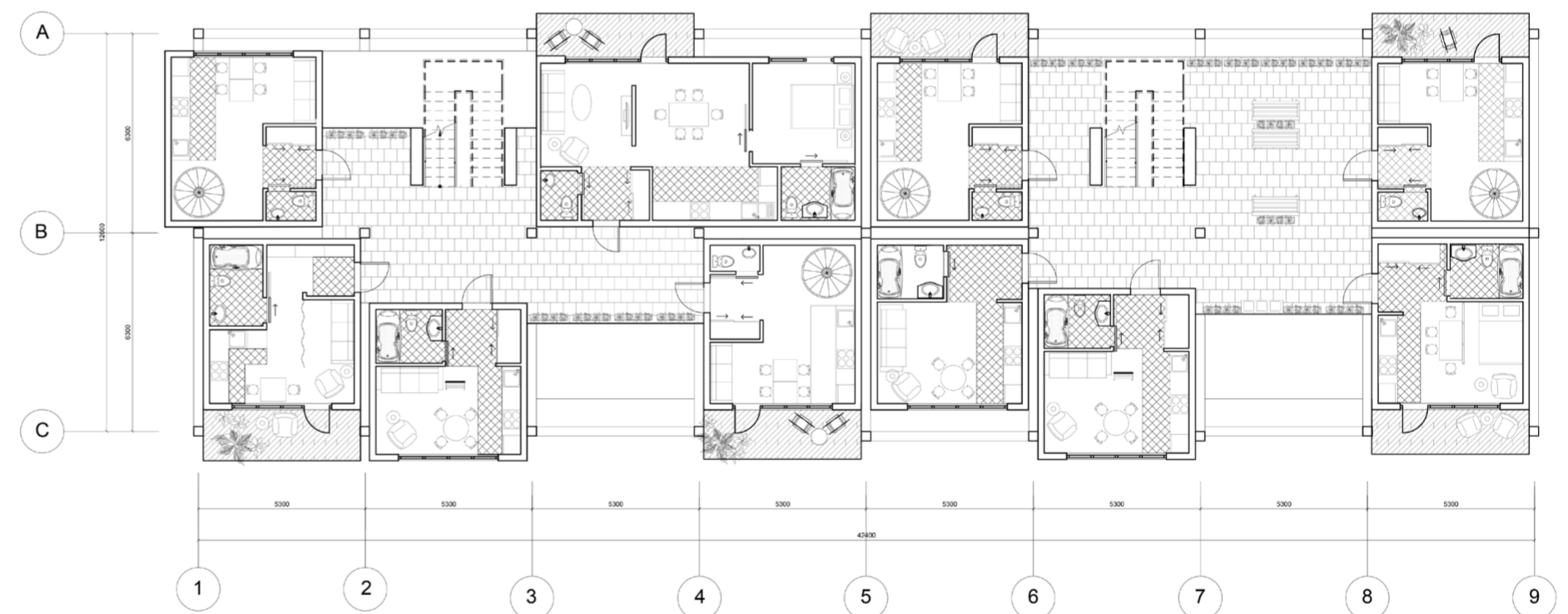


Indians from these houses live in cramped conditions. So, the idea was born to create apartments with individual gardens and terraces, and existing apartments provide balconies with possibility of growing greenery and overing plants.

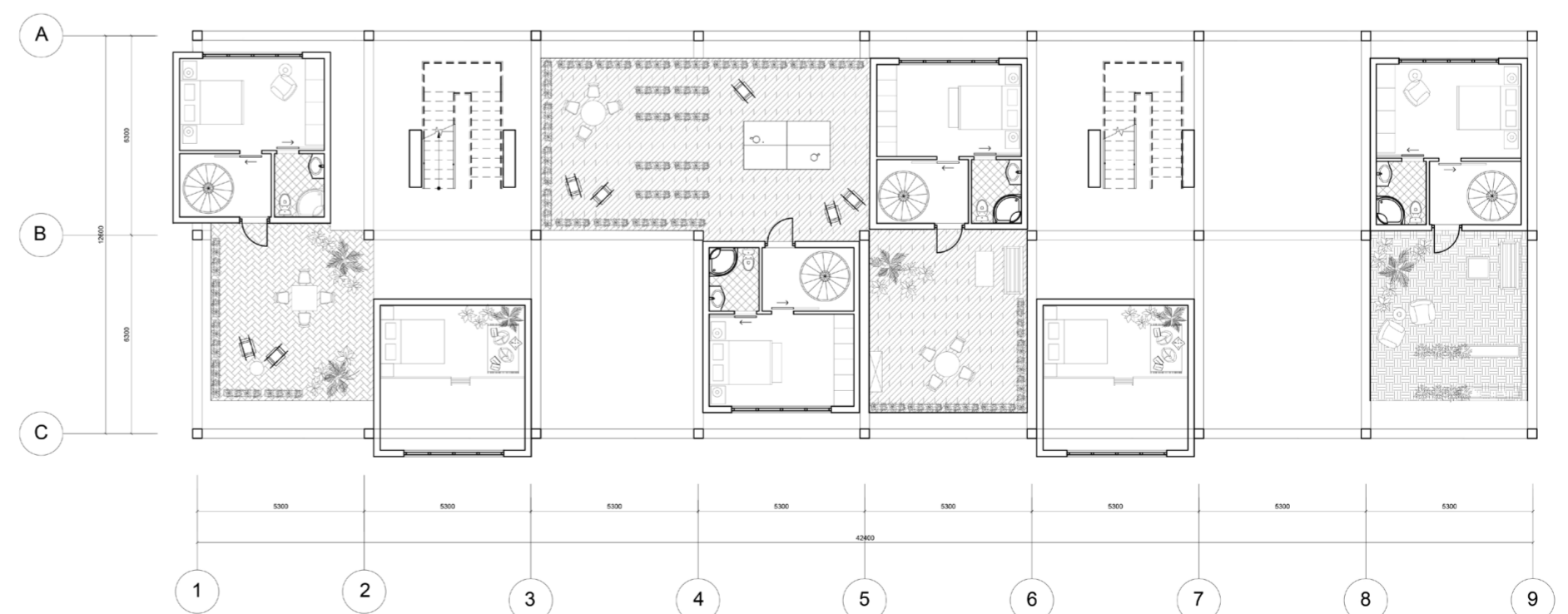
Several types of housing made of CLT panels are combined into a common constructor, thus creating an opportunity to provide a chamber space for terraces and small gardens for personal use.



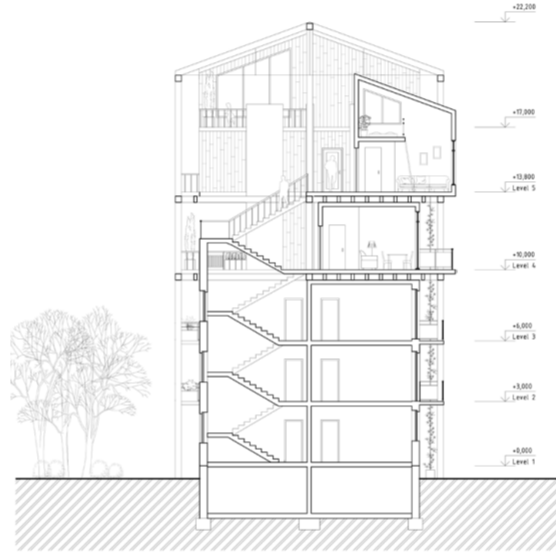
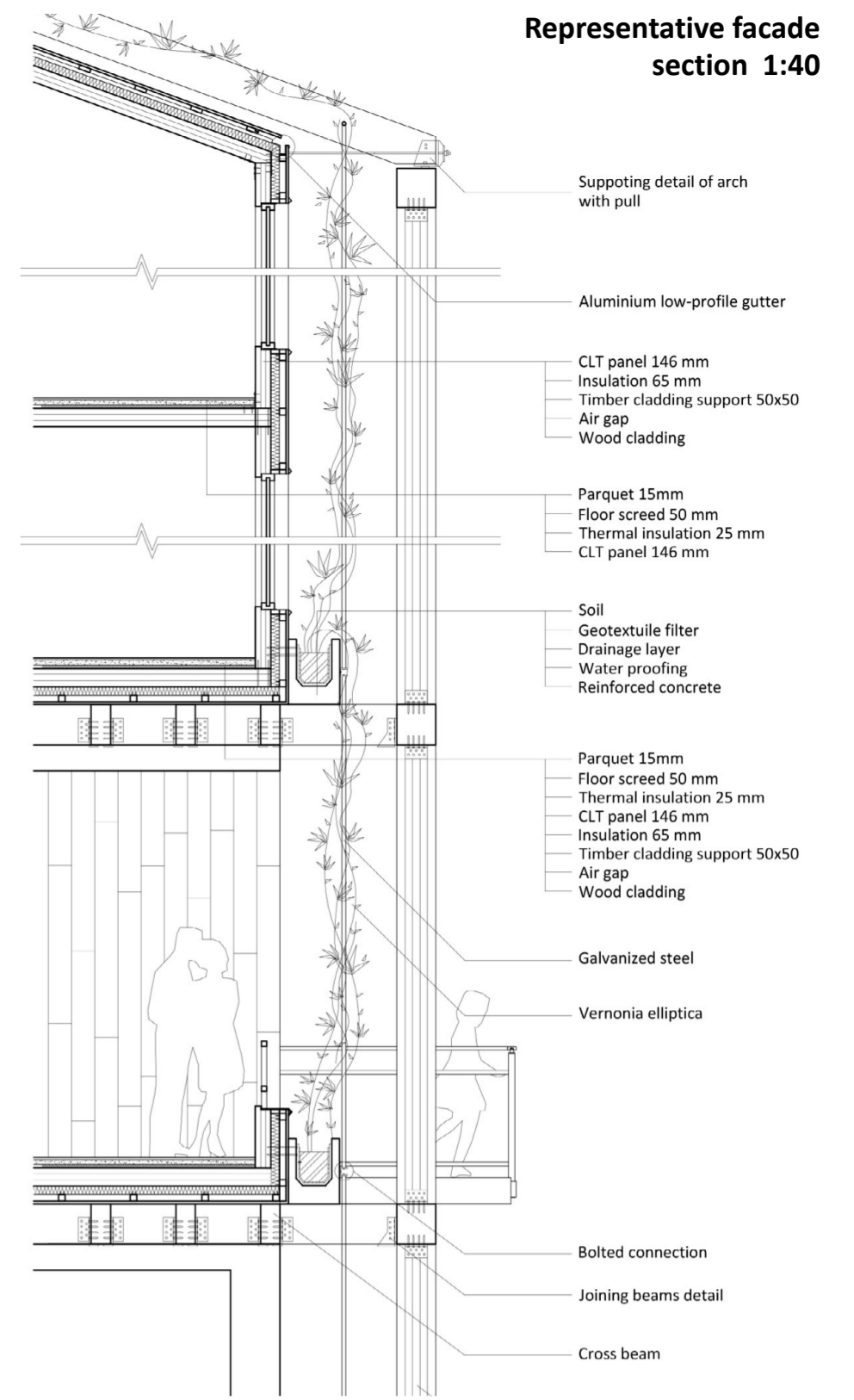
First floor plan 1:200



Second floor plan 1:200

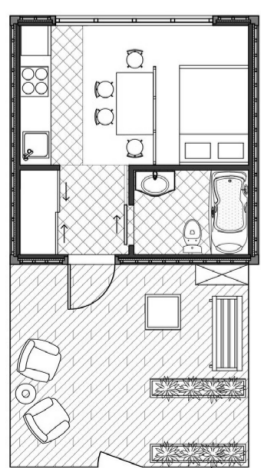
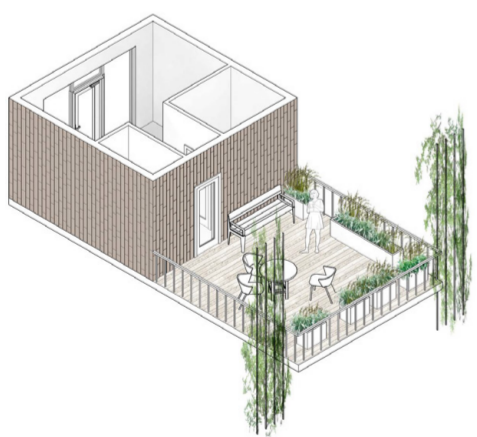


Mezzanine floor plan 1:200



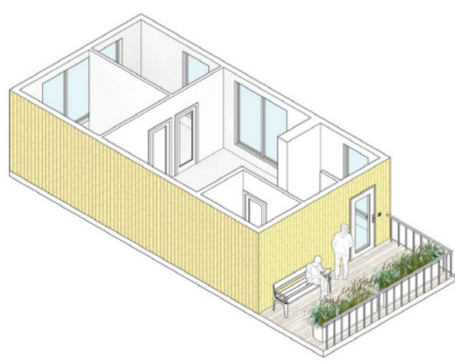
Type A
One-level apartment
5x5

This module designed for one person or a young couple. It is a small studio.



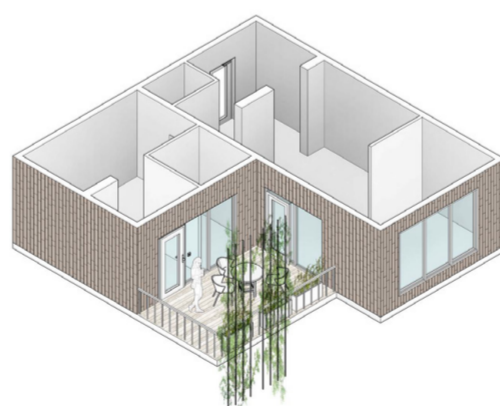
Type B
One-level apartment
5x10

This module designed for small family. There is two bedrooms and spacious living room with kitchen.



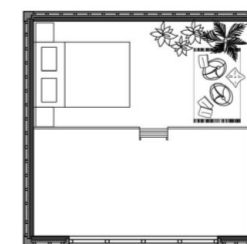
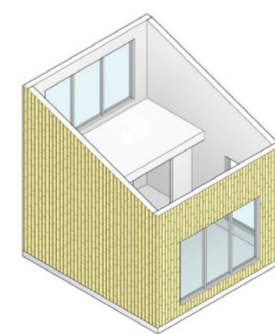
Type C
One-level apartment
5x5 + 5x10

This module includes a bedroom with a cabinet, a spacious kitchen and a bedroom with a exhible partition



Type D
Mezzanine oor
apartments

This module is a spacious studio with mezzanine level, where sleeping area is located.



Type E
Two-level apartment
5x5

This module include a dining room on the rst level and a spacious bedroom on the second level.

